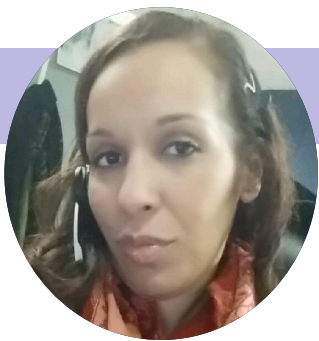


Your WINFertility
Specialty Care Team



AFFORDABLE TREATMENT PROGRAMS TO HELP YOU BUILD YOUR FAMILY.

Your WINFertility Specialty Care Team works cohesively to guide you on the journey to parenthood. The [WIN Direct-to-Consumer Program](#) works with the nation's top Reproductive Endocrinologists, offering below market Treatment Bundle rates and financing options if needed. Your WIN Specialty Care Team is here to support you on your family-building journey.



Amy Nieves | Operations Manager
Amy@winfertility.com

- Manages both the operations process and provider support
- Ensures all operational functions are carried on in an appropriate and effective way
- Supports all aspects of WIN DTC and WINRX Programs

Lyz Espinoza | Wellness Specialist
Lyz@winfertility.com

- Assists in accessing WIN wellness support resources
- Provides wellness support to WIN DTC and WINRX members



Angel Forte | WINRX Specialist
Angel@winfertility.com

- Guides all aspects of WINRX including the process, medications and cost
- Reviews cost-reducing medication protocol and substitutions

Jessica Larosiliere | Patient Specialist Assistant
Jessica@winfertility.com

- Primary liaison between Patient Specialists and providers
- Assists with medication requests and portal entries
- Reviews and processes all incoming treatment plans and prescriptions



Shaunda Brown | Director of Provider Network Engagement
SBrown@winfertility.com

- Clarifies questions in relation to the WIN DTC Program
- Delivers provider portal training
- Builds transparent, mutually-beneficial relationships with WIN providers
- Updates and expands contract relationships

How WIN Helps You Build Your Family



THE RIGHT TEAM

Our dedicated Nurse Care Managers, Behavioral Health trained Care Managers, Nutritionist and Patient Specialists form a 24/7 team, supporting you through every step of your fertility journey. They are guided by a dedicated Medical Advisory Board of leading Reproductive Endocrinologists, further ensuring that you receive the most appropriate and effective care.



THE RIGHT PHYSICIAN

We have a nationwide network of top Reproductive Endocrinologists who offer a full spectrum of treatments. WINFertility's network of fellowship-trained physicians have achieved documented success rates that are among the top in each market they serve.



THE RIGHT PRICE AND PLAN

We provide lower-than-market-rate Treatment BundlesSM, which combine medical services for a single IVF treatment and medications at a reduced "pay-as-you-go" price, versus a multi-cycle option multiple treatments are purchased but not used, in order to receive a discount. WINFertility does not require any clinical, age, gender or sexual-orientation qualifications to participate.



THE RIGHT FINANCIAL ASSISTANCE

If you need help financing your treatments, or prefer to pay over time, we work with some of the most reputable financial companies in the nation that offer attractive rates and payment terms. As many of our patients have limited insurance or have exhausted their benefits, we are able to adjust pricing accordingly to coordinate with your own coverage situation.

Start Building Your Family with These 3 Simple Steps

1 CHOOSE THE RIGHT TEAM AND SPECIALIST

Contact WINFertility for more information about our unique approach. WIN matches you to the WINFertility Network Reproductive Endocrinologist best suited to your needs and location, and helps arrange an appointment. We will answer your questions about the program and how our rates compare to other options in your area.

2 GET A PLAN, PRICE AND SUPPORT

Once you and your WIN REI decide on your best course of treatment, WIN will prepare your customized price quote for the Treatment BundleSM that includes both treatment and related medications prescribed to you. You will also have access to our WIN Nurse Care Managers to answer your questions and provide ongoing education and support.

3 START WITH A TRUSTED PARTNER

If WIN's program is right for you, you will make one payment to WINFertility and we will take it from there. We will order your medications, provide dosing education and support on administering the medications and answer your questions 24/7. WIN helps to coordinate your entire treatment plan, to help you focus on building your family.



For more than 25 years, WINFertility has been a trusted partner to patients, physicians and large insurance payers, offering help to those struggling to build a family. WIN has managed hundreds of thousands of healthcare cycles. We understand many people may have exhausted their coverage, or have no coverage at all. Our Direct-to-Consumer program allows patients to receive top quality care at an affordable price.

For more information call **1.855.705.4483** or visit www.winfertility.com/patients.